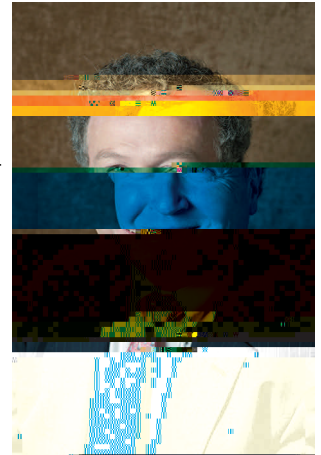


A Message from Vice President Tom Keady

Dear Neighbor:

As a new academic year approaches, it is once again my pleasure to provide you with the Office of Governmental & Community Affairs' newsletter containing development news, event highlights, the 2015 BC football magnet, important dates for student move-in and other useful information.

In construction news, the new 490-bed residence hall at 2150 Commonwealth Avenue is rapidly taking shape after the start of brick and stone façade work this summer. On the Brighton Campus, the 7,000 square foot glass addition has been added to 2101 Commonwealth Avenue making way for expanded exhibition space, offices and support areas for the McMullen Museum of Art and improved University conference and meeting space. In keeping with the University's 2009 Institutional Master Plan goal of housing 96% of our undergraduates in university-controlled housing, construction started in late August at 2000 Commonwealth Avenue to convert and renovate the existing apartment building into a residence hall for 540 undergraduate students.



Continued on Page 2

A Letter from Dean of Students Tom Mogan

Dear Neighbor,

As the semester begins, I'd like to take this opportunity to introduce myself as Boston College's new Dean of Students and to share some thoughts on our work with students around off-campus issues. I began my new position on January 2, 2015 and was informed by my colleagues that I was arriving in the middle of a very mild winter. We all know that this changed quite quickly!

Prior to my arrival at Boston College, I worked at Villanova University in Villanova, Pennsylvania, where part of my role was to serve on a campus-community partnership committee. Therefore, I understand the importance of maintaining a good relationship with our community partners and I hope to further this relationship during my time here. In fact, my family and I will be living next to campus in Newton so I have a vested interest in maintaining positive relations with our neighbors.

I would also like to take this opportunity to reaffirm our commitment to ensuring responsible student conduct in our surrounding communities. During the first week of classes, the Offices of the Dean of Students and Residential Life sponsor a meeting that is mandatory for at least one representative from all off-campus residences. At this meeting we remind Boston College students of their obligations to be responsible and respectful citizens and neighbors while living in the off-campus community. We reinforce with them that BC's Student Guide states that students will be held accountable for behavior both on and off campus and that disciplinary action can be taken in response to complaints from landlords, neighbors, the BC Community Liaison, or the Boston or Newton Police Departments.

To this end, I encourage you to take advantage of the services provided by Boston College's Community Assistance Program. One of the most enlightening experiences I have had since beginning

Continued on Page 3

A Message from Vice President Tom Keady, cont.

Run by the Office of Governmental and Community Affairs and the Office of the Dean of Students, the Community Assistance Program (CAP) continues to enhance the relationship between the wider community and Boston College's on- and off-campus students.

Steve Montgomery, the Off-Campus Stu-

dent Community Liaison, working closely with the Boston Police, Newton Police and BC Police, responds to disturbance calls and addresses concerns of the community.

The Liaison monitors areas where large numbers of off-campus students live on weekend nights

(including Thursdays), holidays, and other high activity dates during the academic year.

Students needing help with city services, landlords, and their neighbors should feel free to contact the CAP

my new position was to go on a “ride-a-long” with BC’s Off-Campus Community Liaison Steve Montgomery. Through this experience I was able to witness firsthand the important work Steve is doing in the community.

We are pleased to report that during the 2014-2015 academic year, we experienced an overall drop in off-campus incidents from the previous year. We believe that increased outreach efforts and support of the off-campus community – such as the mandatory student meeting and the continued effectiveness of our Community Assistance Program - have played a significant role in realizing this success. In gathering data from students, we also believe that the weather was a contributing factor as the harsh winter and poor weather during typical large party events (such as Marathon Monday) also prevented students from hosting or attending events. Building on the overall success of last year, we hope to see another drop in off-campus incidents during the 2015-2016 academic year.

As I begin my first full academic year at BC, I welcome the opportunity to meet you. I hope our paths may cross at a Community Affairs sponsored event, at one of our many community service projects, at any of the cultural/ athletic/ academic events which you may attend at Boston College or maybe even at the local grocery store. If you have any questions or need assistance, please do not hesitate to contact me at the Office of the Dean of Students (617-552-3470). You may also contact Residential Life Off-Campus Housing (617- 552-3470).

Assistant Dean of Students

2015-2016
617-552-3473

Dan Bunch Receives 2015 Community Service Award

Dan Bunch, director of Learning to Learn, is this year's winner of the Boston College Community Service Award, given to a University employee whose actions exemplify the Jesuit spirit of service to others. The award, sponsored by the Office of Governmental and Community Affairs, was presented to Bunch by University President William P. Leahy, S.J., at Boston College's annual recognition dinner.

Bunch '79 MSW '81, began his professional career at Boston College in 1982 and has served as Learning to Learn director since 1987. Learning to Learn is a program designed to improve students' critical thinking abilities and provide them with the learn-

ing skills and problem solving skills they need to succeed in college and

beyond. Open to all students, Learning to Learn especially seeks to assist those who may face obstacles to success in a challenging academic

environment like BC, including first-generation college students, students with high

financial need or with a learning or physical disability.

One of Learning to Learn's signature programs is the

College Transition Program