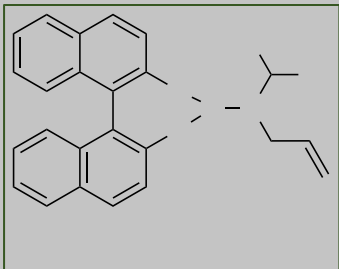


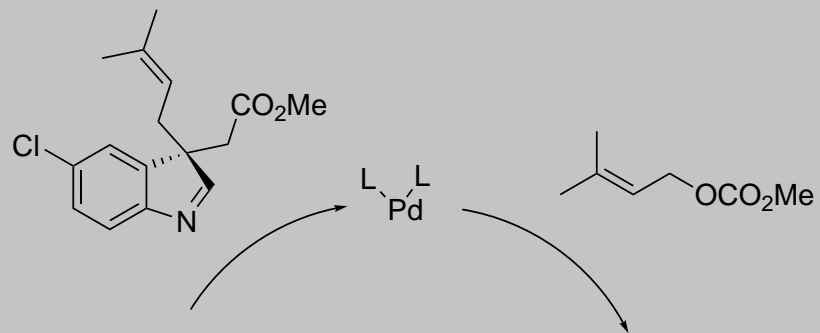
! "##"\$%&' ()*\$"+,
-)+%- "(
. ' /01 (02%34%5657

!"#\$%&' ()!"\$)&' *)+"#, &-)./O&1, #' 2)

34567)8948: ;8944<



! "#\$%&'#\$! () *+,&'-. *



! "#\$%#

' "\$%#("\$%#) -

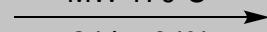




PBu₃ (2 eq.)

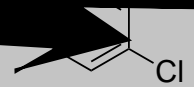
PhMe

MW 170 °C

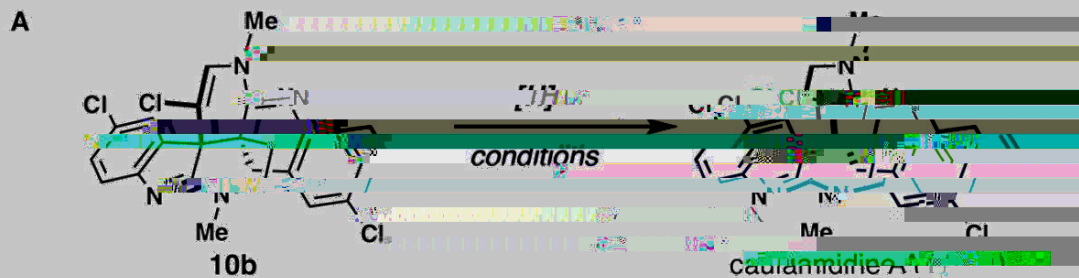


24 hr, 94%

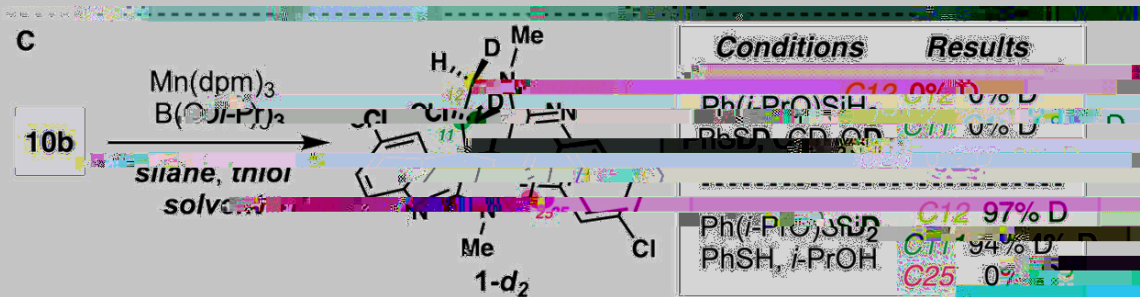
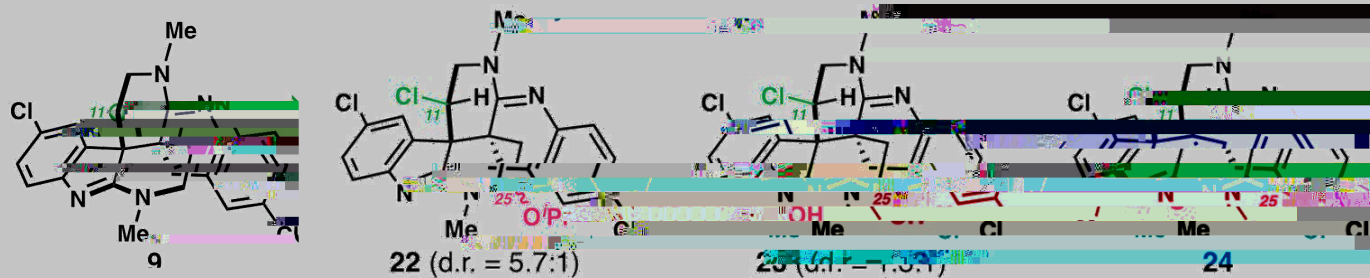


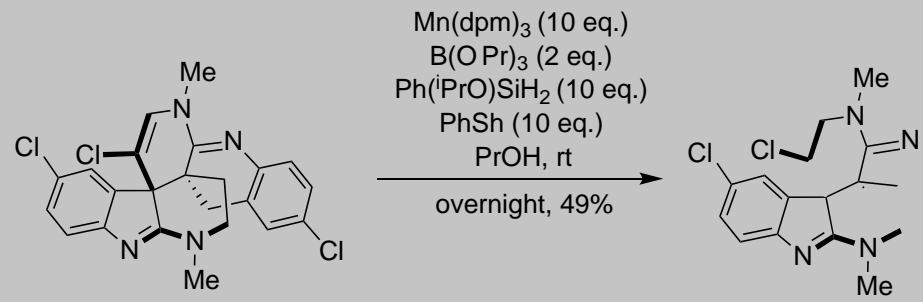


(1.1 eq.)
4 hr, 54%



Entry	Conditions	Reactants	Products
1	TEA, Et ₃ SiH, DCM	10b	22 (14%), 23 (6%)
2	H ₂ , PtO ₂ , AcOH/Et ₃ N	10b	22 (16%), 23 (9%), 24 (17%)
3	FpCp ₂ Na, NaBH ₄ , EtOH/H ₂ O	10b	22 (16%), 23 (9%), 24 (17%)
4	Cp ₂ Fe, Et ₃ SiH, 1,4-C ₆ H ₄ , Et ₃ N, TBHP, <i>n</i> -PrOH	10b	22 (16%), 23 (9%), 24 (17%)
5	(rac)-Cp ₂ Fe, PhSiH ₃ , EtOH	10b	22 (16%), 23 (9%), 24 (17%)
6	Mn(dpm) ₃ , PhSiH ₃ , TBHP, EtOH	10b	22 (16%), 23 (9%), 24 (17%)
7 ^b	Mn(dpm) ₃ , Ph(<i>i</i> -PrO)SiH ₂ , TBHP, EtOH	10b	22 (16%), 23 (9%), 24 (17%)
8 ^c	Mn(dpm) ₃ , Ph(<i>i</i> -PrO)SiH ₂ , TBHP, <i>i</i> -PrOH	10b	22 (16%), 23 (9%), 24 (17%)
9 ^d	Mn(dpm) ₃ , Ph(<i>i</i> -PrO)SiH ₂ , TBHP, EtOH	10b	22 (16%), 23 (9%), 24 (17%)
10 ^e	Mn(dpm) ₃ , Ph(<i>i</i> -PrO)SiH ₂ , TBHP, EtOH	10b	22 (16%), 23 (9%), 24 (17%)





Mn(dpm)₃ (10 eq.)
B(OⁱPr)₃ (2 eq.)
Ph(ⁱPrO)SiH₂

