



**1:** Naphterpin

**2:** Naphterpin B



**3:** Naphterpin C



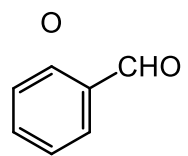
**8:** Marinone (X = H, Y = Br)

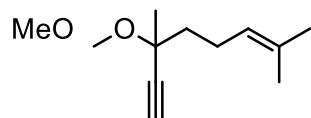
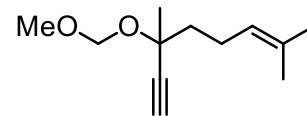
**9:** Isomarinone (X = Br, Y = H)

- Naphterpin and Marinone are families of marine merotepenoids
- Naphterpin was the first natural product discovered in this family, isolated by Seto et al. in 1990
- Marinone was isolated by Fenical and coworkers in 1992 and isomarinone reported in 2000

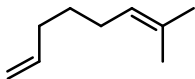
## Retrosynthetic Analysis of the Naphterpins





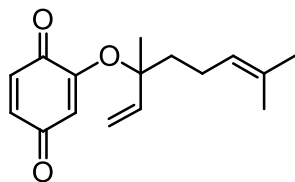






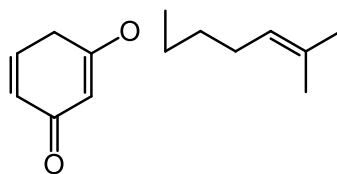
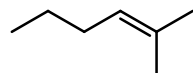
OT

---

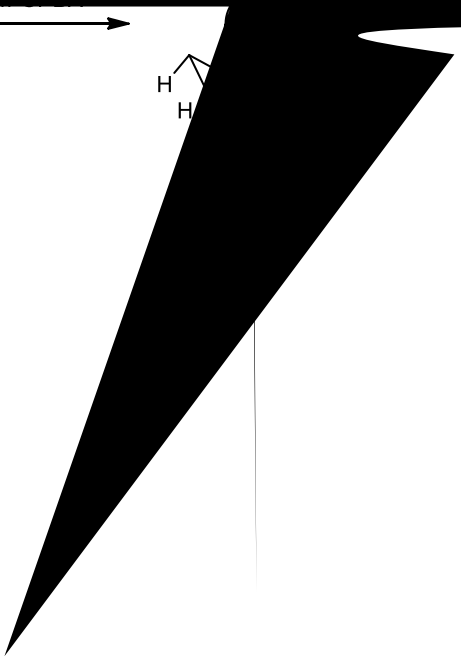


**1**

---







---

7: debromomarinone

(±)-9: Isomarin